

Headquarters • R&D • State-of-the-Art Facility Up to 669,101 SF Sublease Available



669,101 SF SUBLEASE
24500 Northwest Freeway (Highway 290)
Houston, Texas



For information and/or inspection:

Andrew R. Spence

713/877-1464

andy_spence@cushwake.com

Tim D. Relyea

713/877-8752

tim_relyea@cushwake.com

Scott Wegmann

713/877-8261

scott_wegmann@cushwake.com

Roger Gage

408/572-4112

roger_gage@cushwake.com



Williams Tower, Suite 5300
2800 Post Oak Boulevard
Houston, Texas 77056-6111
TEL: 713/877-1700
FAX: 713/877-1965
www.cushmanwakefield.com

All information contained herein is from sources deemed reliable and is submitted without any guarantees, warranties or representations as to the completeness or accuracy thereof. Cushman & Wakefield of Texas, Inc. assumes no liability for errors or omissions, change of price or other conditions, including, without limitation, prior sale, lease, or withdrawal without notice. This presentation is for information purposes only and under no circumstances whatsoever is to be deemed a contract or any other form of binding commitment.

**24500 Northwest Freeway (Highway 290)
Houston, Texas**



Food Court



**24500 Northwest Freeway (Highway 290)
Houston, Texas**



building entrance



*east side
of campus*



building entrance

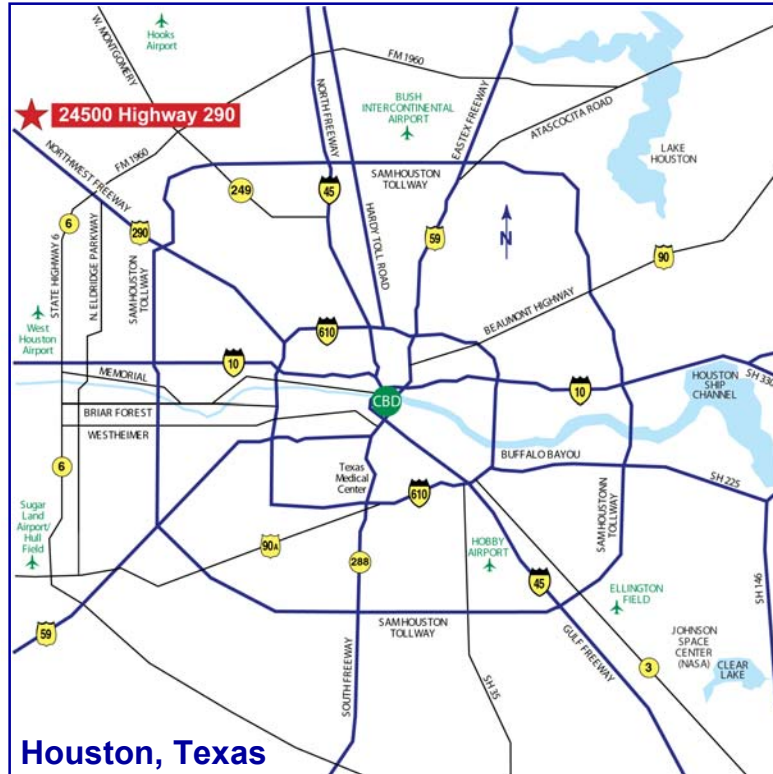


*west side
of campus*



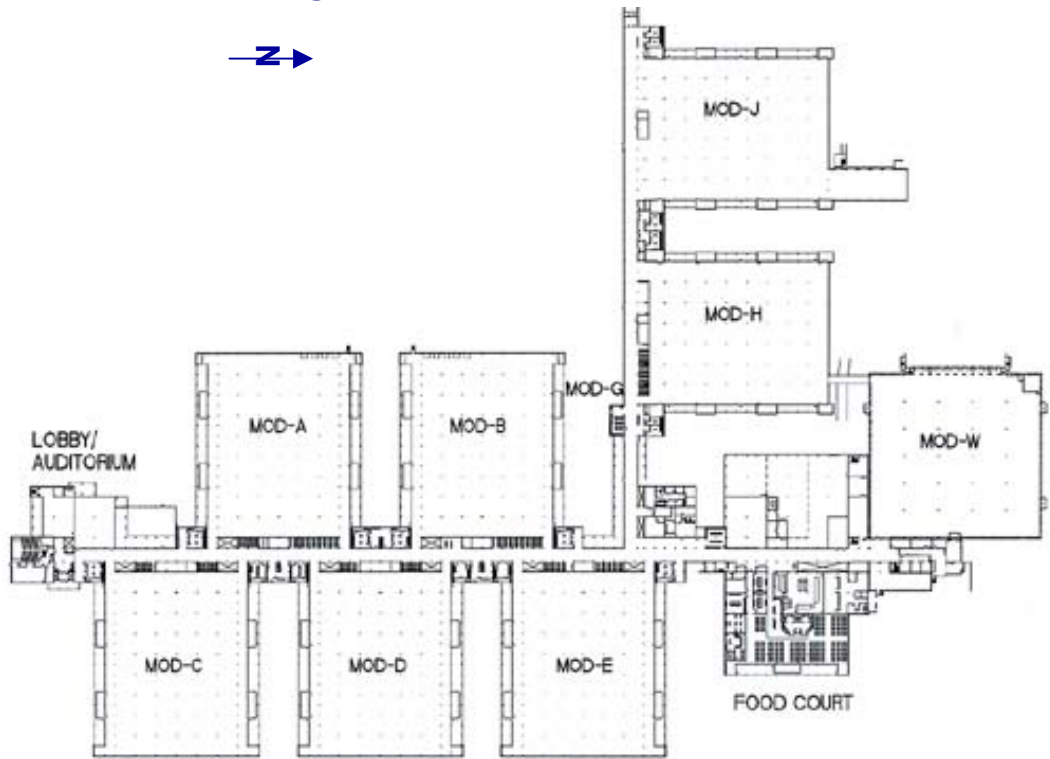
**24500 Northwest Freeway (Highway 290)
Houston, Texas**

Location Maps



All information contained herein is from sources deemed reliable and is submitted without any guarantees, warranties or representations as to the completeness or accuracy thereof. Cushman & Wakefield of Texas, Inc. assumes no liability for errors or omissions, change of price or other conditions including, without limitation, prior sale, lease, or withdrawal without notice. This presentation is for information purposes only and under no circumstances whatsoever is to be deemed a contract or any other form of binding commitment.

Site Layout



Building Facts

- ◆ Entire facility - 669,101 SF
- ◆ Sublease term through 05/31/09
- ◆ 1,932 parking spaces (2.78/1,000 SF)
- ◆ 2,600 tons chilled water HVAC capacity
- ◆ 8 functional modules
- ◆ 2,000 kW generator capacity
- ◆ 1,200 kVA UPS capacity
- ◆ 50,000 gallon sewer plant
- ◆ 35 kV dual-feed electrical
- ◆ 10,000-connection telephone switch

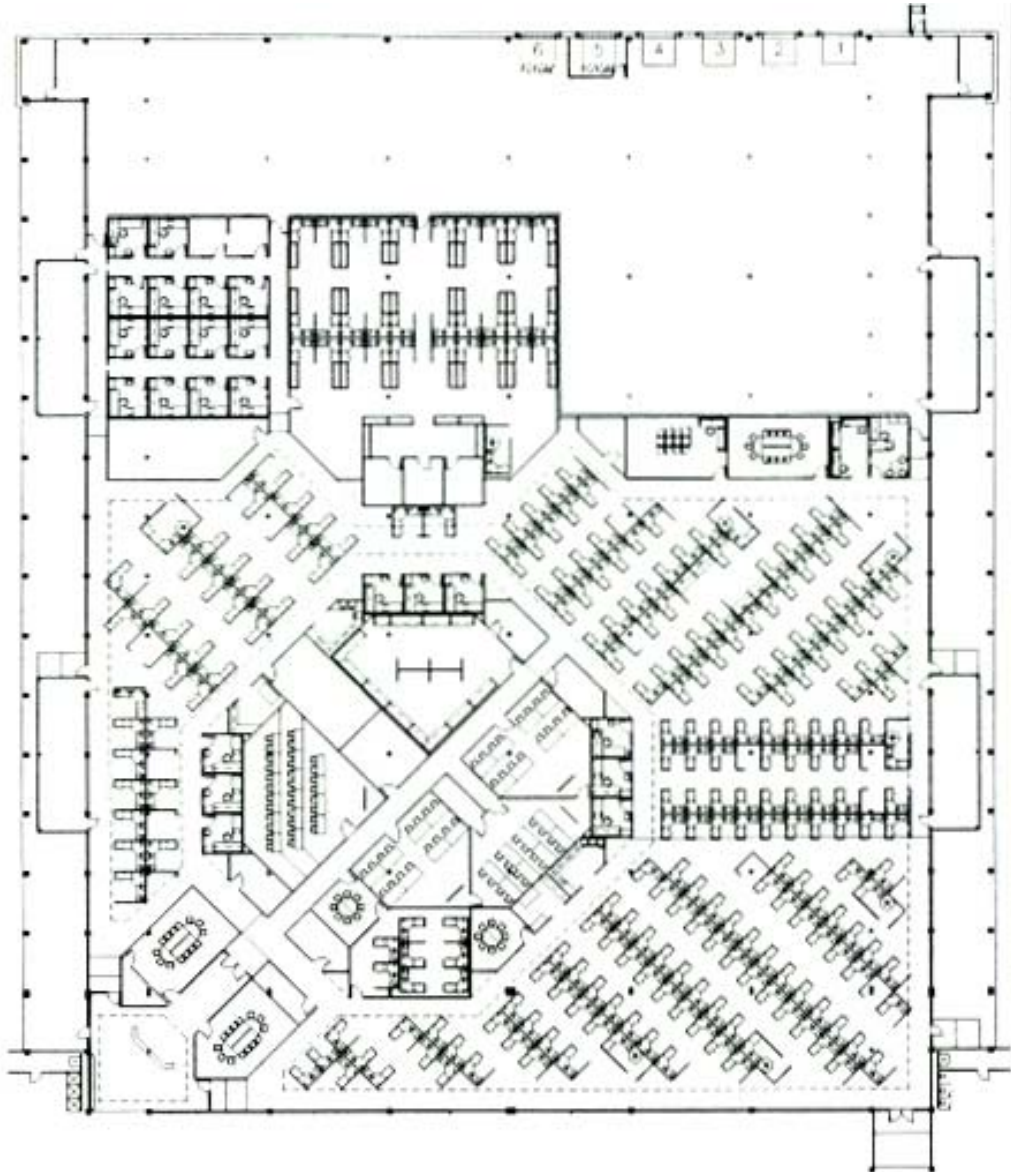
Site Amenities

- ◆ Surface parking with covered walkways
- ◆ Full-service cafeteria with seating for 380 people
- ◆ Conference center
- ◆ Fitness center
- ◆ Credit union
- ◆ Employee store
- ◆ Security control center

669,101 SF

24500 Northwest Freeway (Highway 290)
Houston, Texas

MODULE "A"

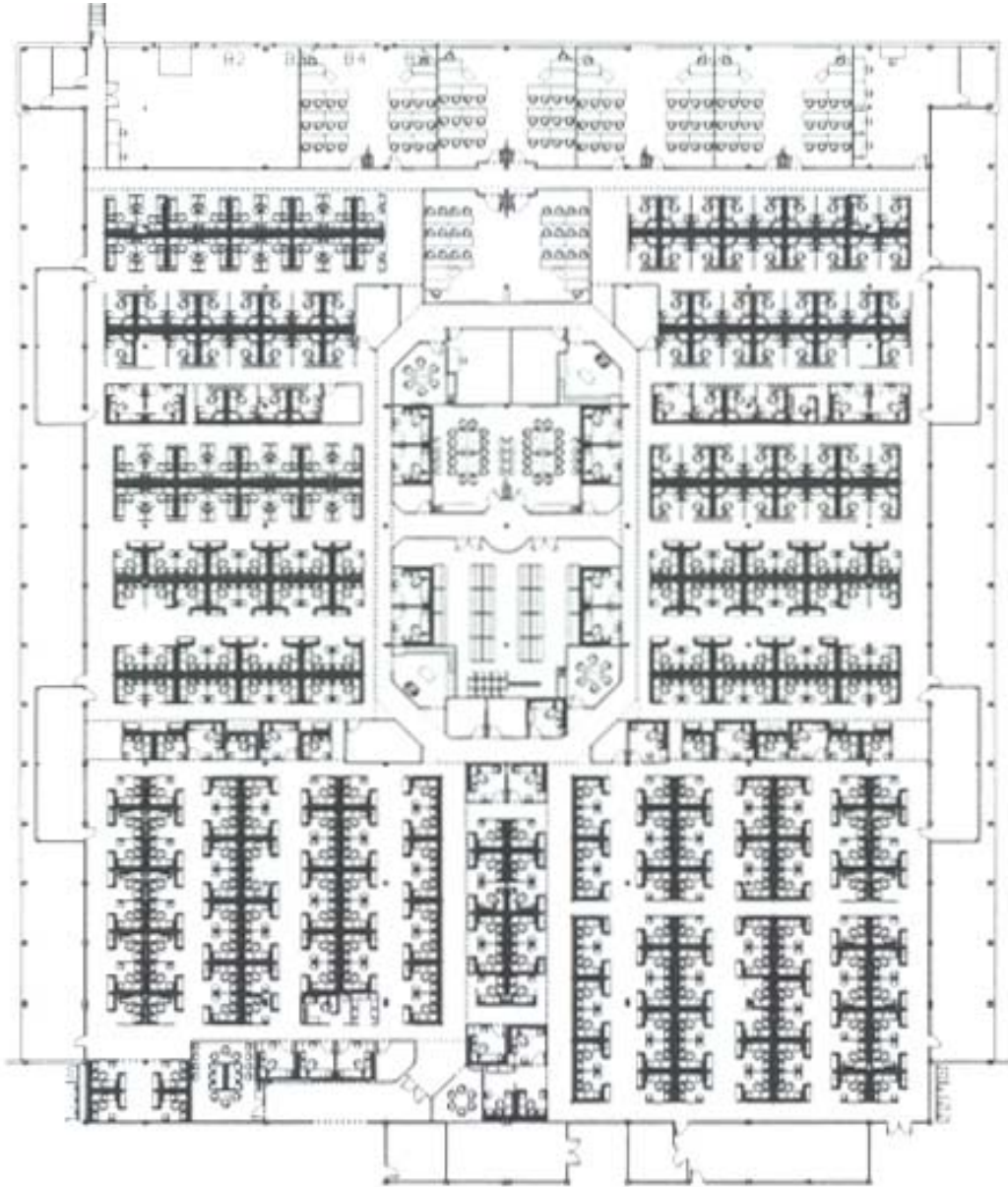


All information contained herein is from sources deemed reliable and is submitted without any guarantees, warranties or representations as to the completeness or accuracy thereof. Cushman & Wakefield of Texas, Inc. assumes no liability for errors or omissions, change of price or other conditions, including, without limitation, prior sale, lease, or withdrawal without notice. This presentation is for information purposes only and under no circumstances whatsoever is to be deemed a contract or any other form of binding commitment.

669,101 SF

24500 Northwest Freeway (Highway 290)
Houston, Texas

MODULE "B"

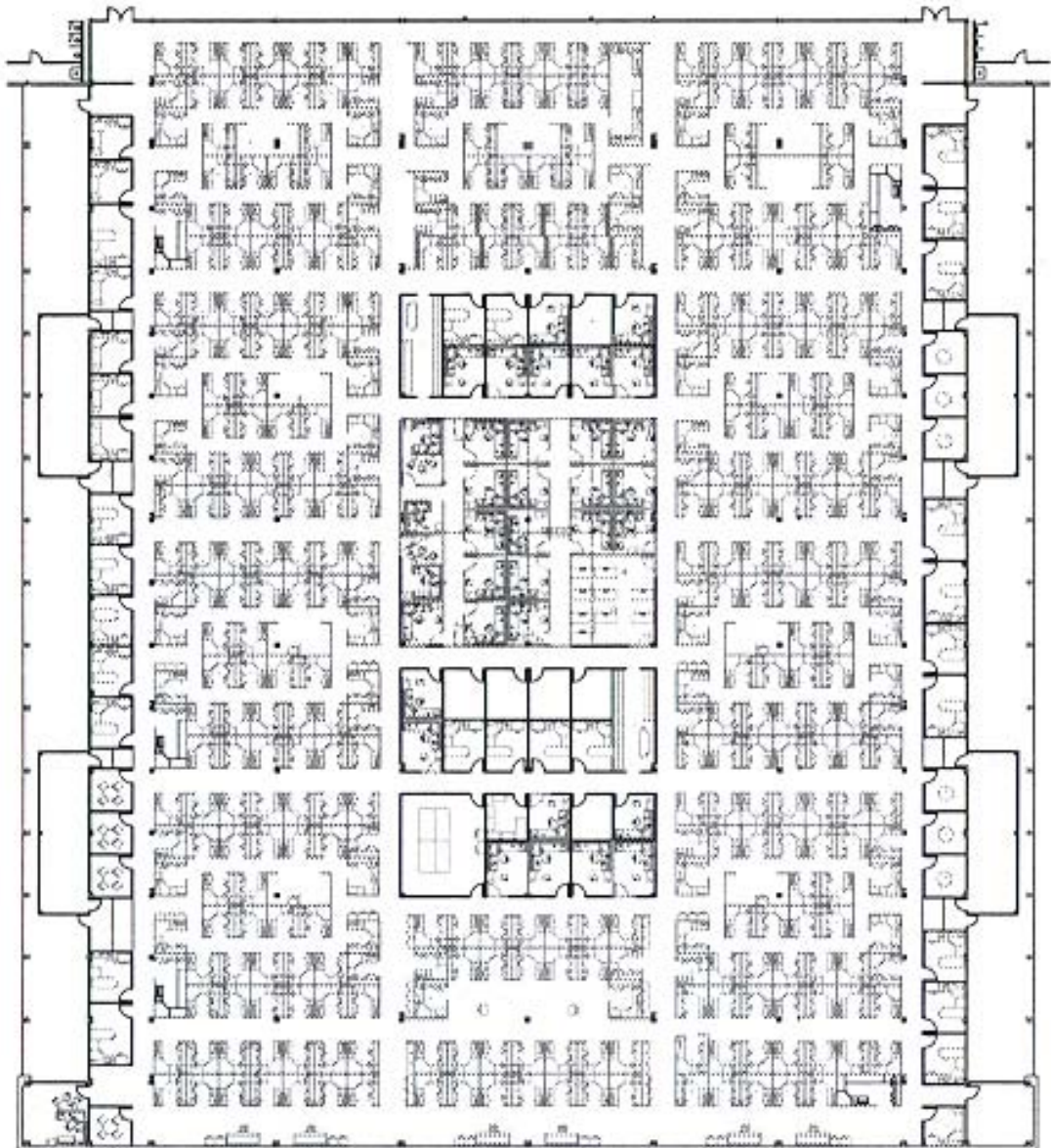


All information contained herein is from sources deemed reliable and is submitted without any guarantees, warranties or representations as to the completeness or accuracy thereof. Cushman & Wakefield of Texas, Inc. assumes no liability for errors or omissions, change of price or other conditions, including, without limitation, prior sale, lease, or withdrawal without notice. This presentation is for information purposes only and under no circumstances whatsoever is to be deemed a contract or any other form of binding commitment.

669,101 SF

24500 Northwest Freeway (Highway 290)
Houston, Texas

MODULE "C"

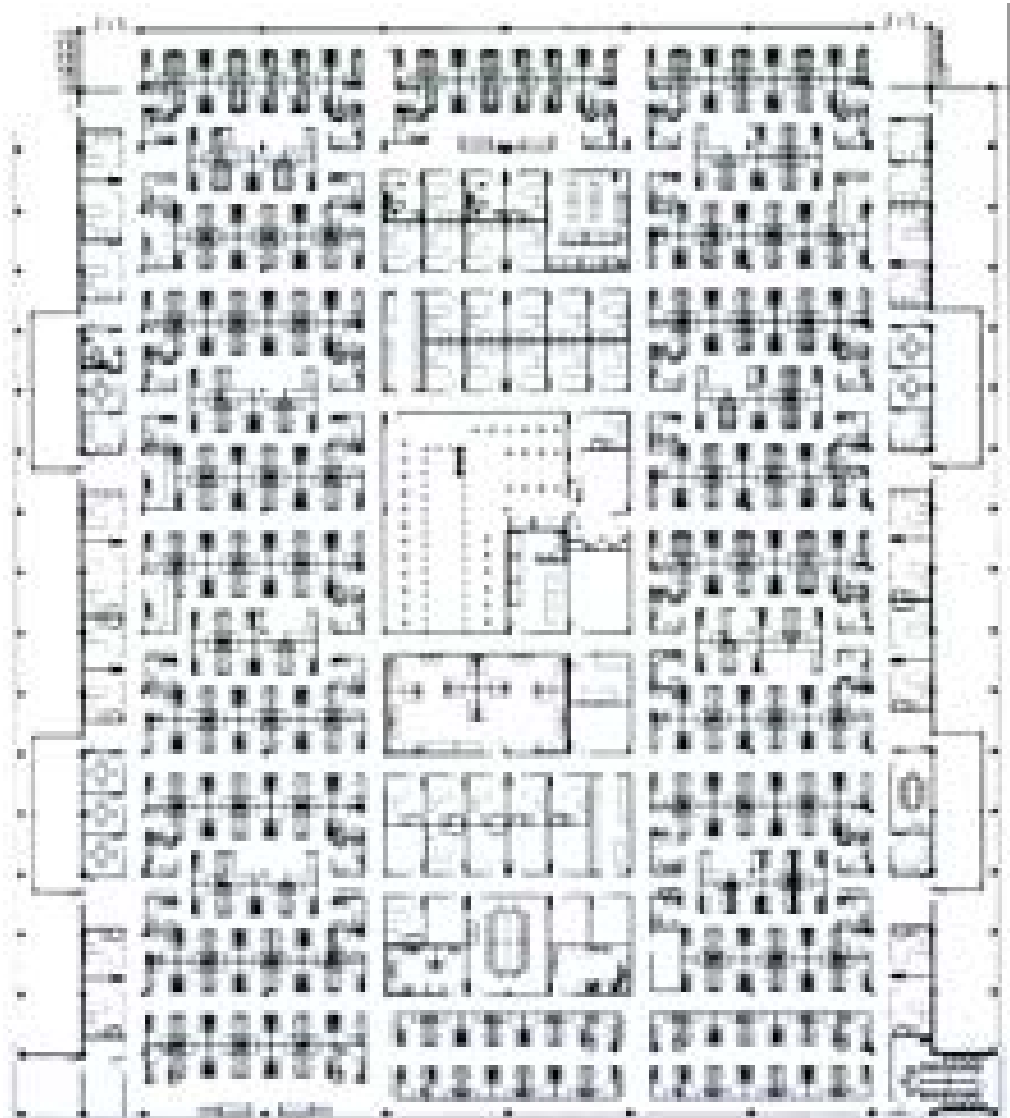


All information contained herein is from sources deemed reliable and is submitted without any guarantees, warranties or representations as to the completeness or accuracy thereof. Cushman & Wakefield of Texas, Inc. assumes no liability for errors or omissions, change of price or other conditions, including, without limitation, prior sale, lease, or withdrawal without notice. This presentation is for information purposes only and under no circumstances whatsoever is to be deemed a contract or any other form of binding commitment.

669,101 SF

24500 Northwest Freeway (Highway 290)
Houston, Texas

MODULE "D"

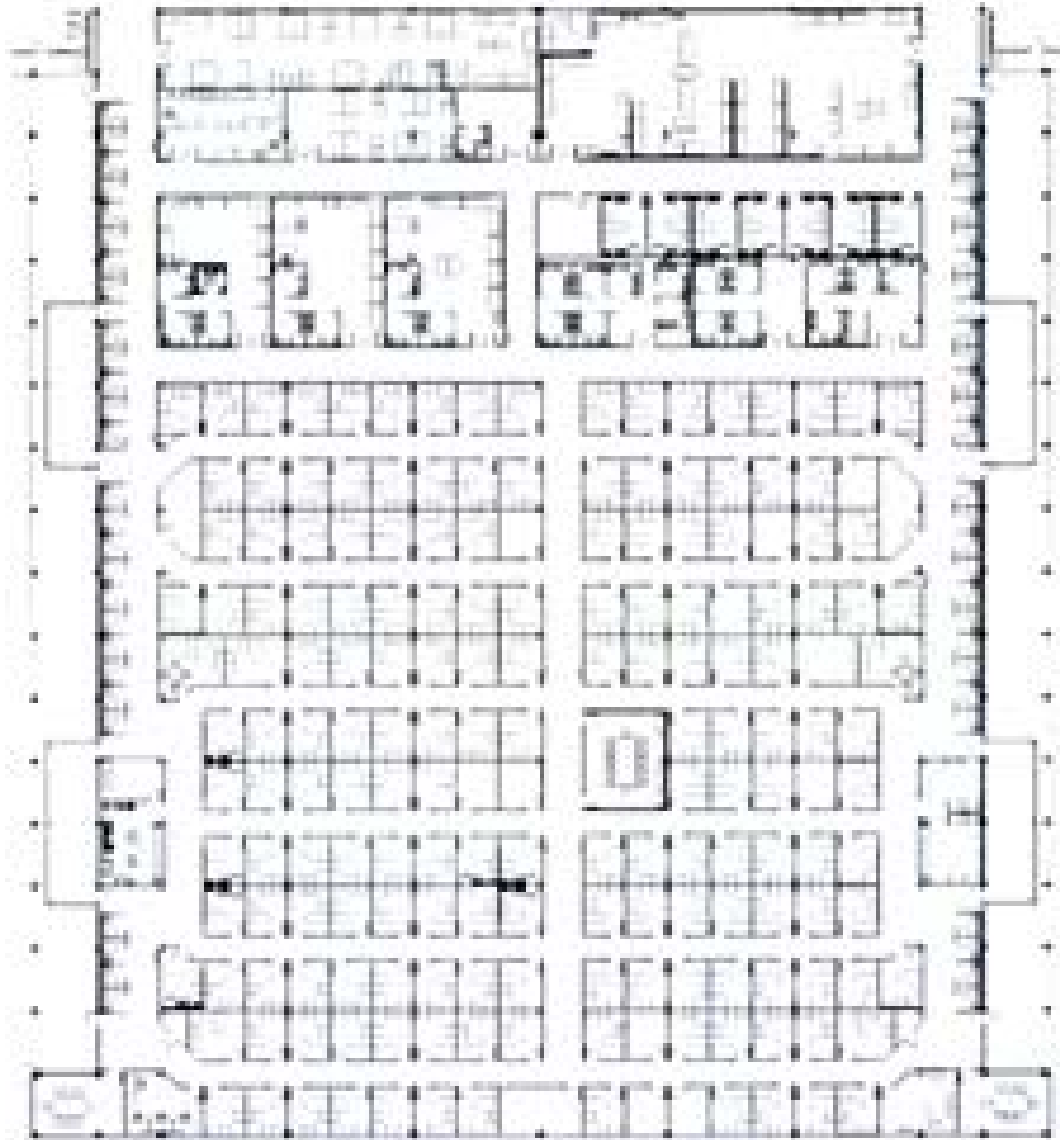


All information contained herein is from sources deemed reliable and is submitted without any guarantees, warranties or representations as to the completeness or accuracy thereof. Cushman & Wakefield of Texas, Inc. assumes no liability for errors or omissions, change of price or other conditions, including, without limitation, prior sale, lease, or withdrawal without notice. This presentation is for information purposes only and under no circumstances whatsoever is to be deemed a contract or any other form of binding commitment.

669,101 SF

24500 Northwest Freeway (Highway 290)
Houston, Texas

MODULE "E"



All information contained herein is from sources deemed reliable and is submitted without any guarantees, warranties or representations as to the completeness or accuracy thereof. Cushman & Wakefield of Texas, Inc. assumes no liability for errors or omissions, change of price or other conditions, including, without limitation, prior sale, lease, or withdrawal without notice. This presentation is for information purposes only and under no circumstances whatsoever is to be deemed a contract or any other form of binding commitment.